



**ZEILFELDER
PUMPEN**

HIGH PERFORMANCE PUMPS



**Rotary Lobe/
Gear Pumps**

Up to:

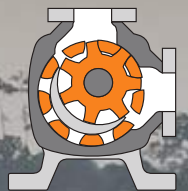
120 bar

450°C

$\eta=$ **92%**

3,400,000 mPas

API, TA-Luft,
ATEX and TR CU
certifications



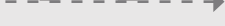
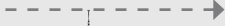
made in Germany



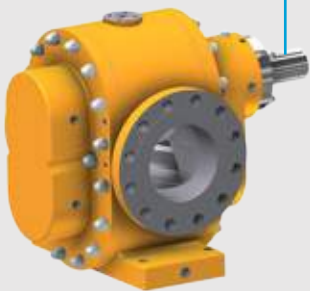
OUR ADVANTAGES

Zeilfelder's diverse high performance pumps are able to serve all your needs and respond to any challenge.

UP TO 120 BAR



1.2 KM WATER COLUMN



DESIGNED FOR*

- Complex and difficult challenges
- Pressures up to 120 bar
- Suction lifts up to 8 m
- Flow rates from 1.5 l/h to 300 m³/h
- Viscosities up to 3,400,000 mPas
- Temperatures from -60°C to 450°C
- Dosing (repeat accuracy > 99%)
- Explosive und toxic substances
- Liquids containing solids (up to 90%)
- Liquids containing shear sensitive materials (for example fruits)
- Polymerizing or coagulating liquids

ADVANTAGES*

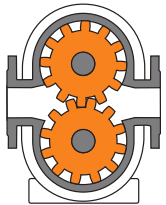
- API, ATEX, TA-Luft and TR CU compliant
- High durability through high-end bearings and special coatings
- Low energy consumption and high efficiency up to $\eta = 92\%$ through tight manufacturing tolerances
- Dry running capability
- Nearly pulsation free pumping at varying viscosities
- Low rotational speed and gentle pumping because of high displacement/revolution
- Completely reversible flow
- Vertical flow
- Low noise level
- No valves required

OPTIONS

- All sealing options: lip seal/packing, single and double mechanical seals and magnetic couplings
- Explosion proof
- Heating jacket (steam, oil or electric)
- Heated sealing area
- Fully ceramic pump
- Special materials for extreme applications

*Depending on the pump type and series

GEAR PUMPS



PRESSURE
UP TO 120 bar

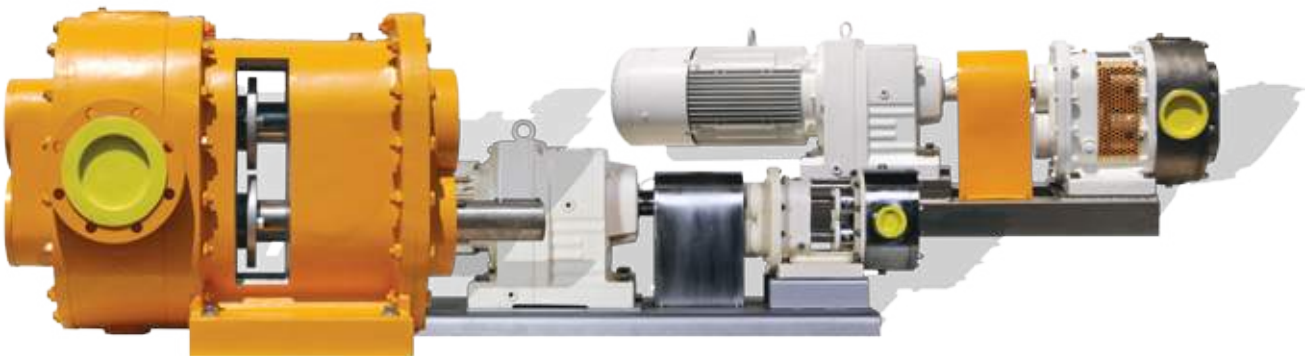
VISCOSITY
UP TO 150,000 mPas

FLOW RATES
UP TO 5000 l/min
(300 m³/h)

SUCTION LIFT
UP TO 6 m

TEMPERATURE
-60 TO 450°C

ROTARY LOBE PUMPS



PRESSURE
UP TO 64 bar

VISCOSITY
UP TO 3,400,000 mPas

FLOW RATES
UP TO 5,000 l/min
(300 m³/h)

SUCTION LIFT
UP TO 8 m

TEMPERATURE
-60 TO 450°C

POSITIVE DISPLACEMENT PUMPS

Zeilfelder pumps work by using two rotating elements, unmeshing at the suction side of the pump, to create a vacuum that fills the spaces created between the elements and the suction casing. These spaces then transport the fluid along the outer casing to the discharge side where the gears re-mesh and discharge the fluid.

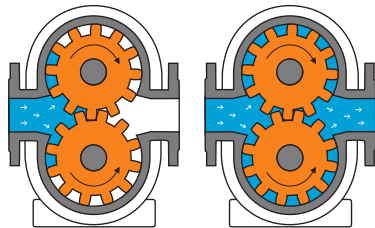
Positive displacement pumps are designed to handle large changes in pressure, viscosity and flow rate and are often used for highly viscous liquids with large percentages of solids.

EXTERNAL GEAR PUMPS

are self-priming, non-pulsating and reversible pumps that work best on clean, lubricating fluids with a viscosity thicker than water. Two gear teeth, one idler and one driver, mesh together to transfer the liquid.

Because of the balanced construction and bearings on both sides of the shafts, the pumps are capable of non-pulsating flow and high pressures.

SERIES
ZK BLUE
ZH/ZV BLUE
PQ GREEN



OVERVIEW

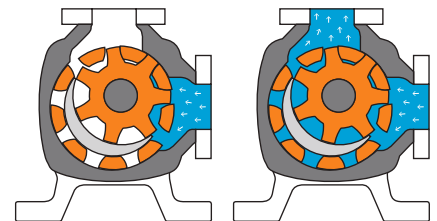
- For standard to high end applications
- ZK and ZH/ZV Blue available in all materials
- PQ Green available in cast iron and stainless steel

INNER GEAR PUMPS

are self-priming, non-pulsating and reversible pumps that work best on clean, lubricating fluids with a viscosity thicker than water. Two gear teeth, one idler and one driver, mesh together around a crescent divider to transfer the liquid.

Because of the simple one shaft construction, inner gear pumps are less expensive than comparable pumps and are very easy to maintain.

SERIES
ZI GREEN



OVERVIEW

- For standard applications
- Available in cast iron and stainless steel

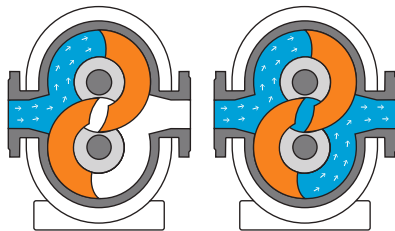
“CUSTOM SOLUTIONS FOR EXTREME APPLICATIONS”

ROTARY LOBE PUMPS

are self-priming, dry-run capable and reversible pumps designed for highly viscous liquids containing solid particles. Two non-contacting rotary lobes work together to transfer the liquid, while the shafts are driven by timing gears outside the process liquid.

Because of the very large internal cavities, rotary lobe pumps are able to handle extremely viscous liquids and large abrasive particles.

SERIES
KE/KD BLUE
KS/KDS BLUE



OVERVIEW

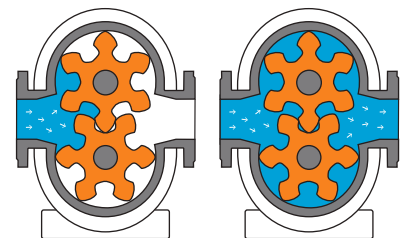
- For high end applications
 - Available in all materials
-

MULTI-WING PUMPS

are a combination of gear and rotary lobe pumps designed for highly viscous liquids containing small solid particles. Two non-contacting lobes, consisting of multiple wings, work together to transfer the liquid, while the shafts are driven by timing gears outside the process liquid.

Because of the large number of lobes, multi-wing pumps are self-priming, dry-run capable and reversible pumps capable of handling extremely viscous liquids and small abrasive particles.

SERIES
KM BLUE



OVERVIEW

- For standard to high end applications
 - Available in all materials
-

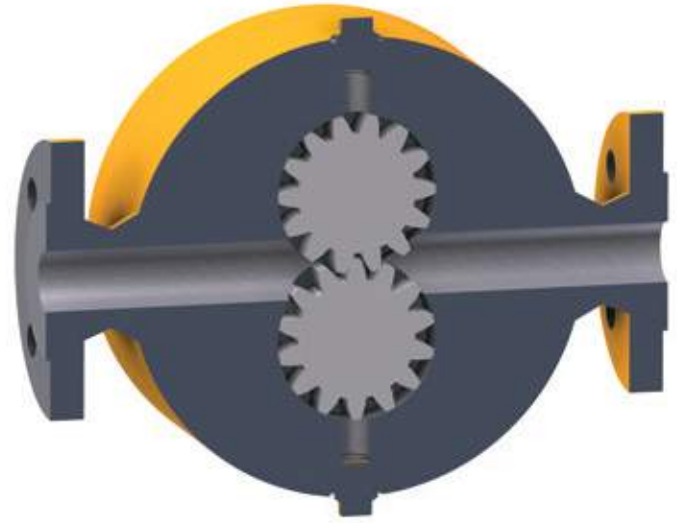
ZK BLUE SERIES

GEAR PUMP

FEATURES

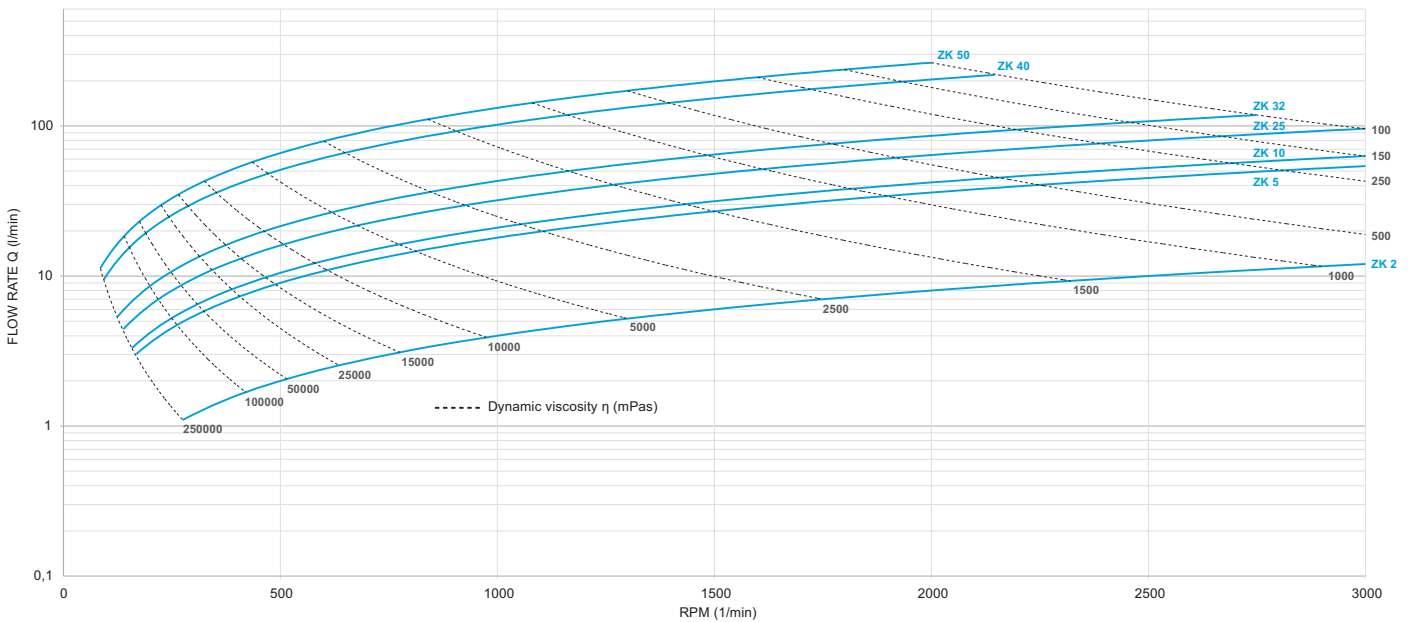
- **Pressure:** 120 bar
- **Suction lift:** 6 m
- **Flow rate:** 0.4 to 300 l/min (0.025 to 18 m³/h)
- **RPM:** 3,000 RPM
- **Efficiency:** 60 to 92%
- **Viscosity:** 0.5 to 25,000 mPas*
- **Temperature:** -60 to 450°C

*Higher values upon request



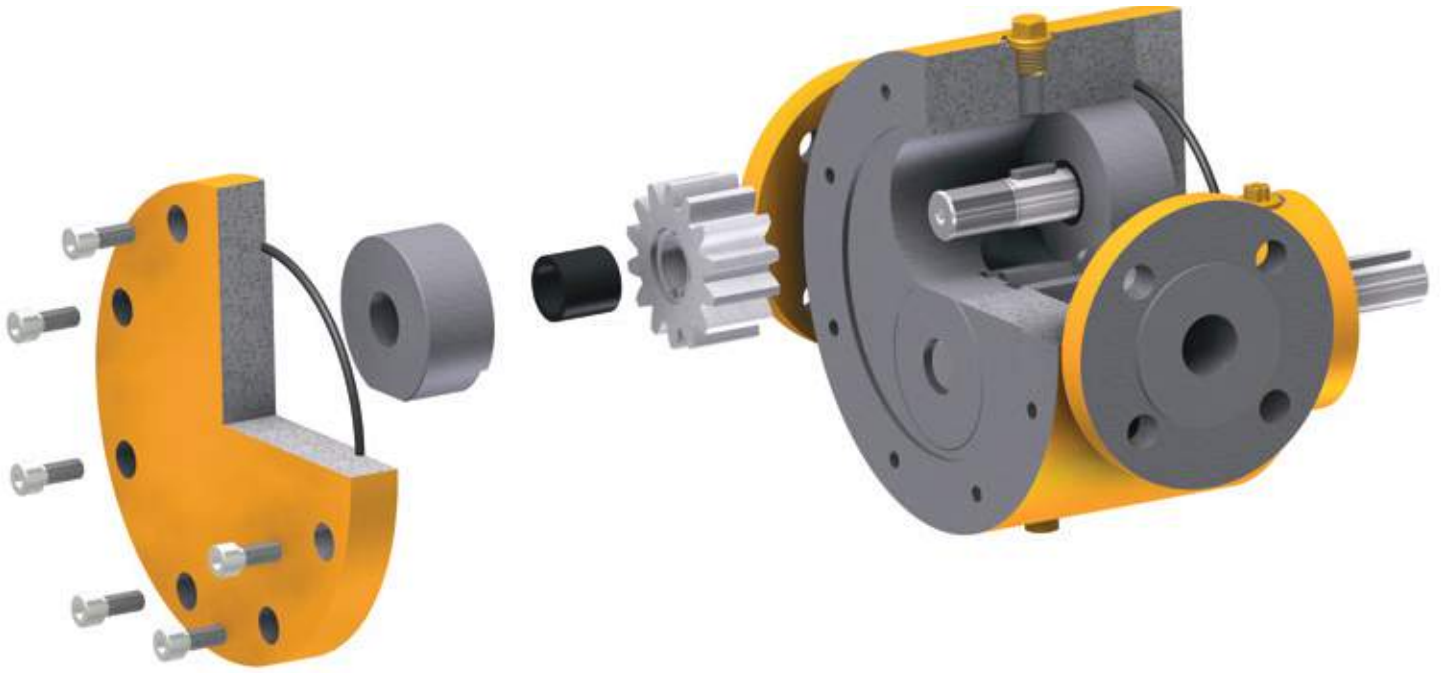
SIZES AND FLOW RATES

Q-n- η -flow rate / viscosity

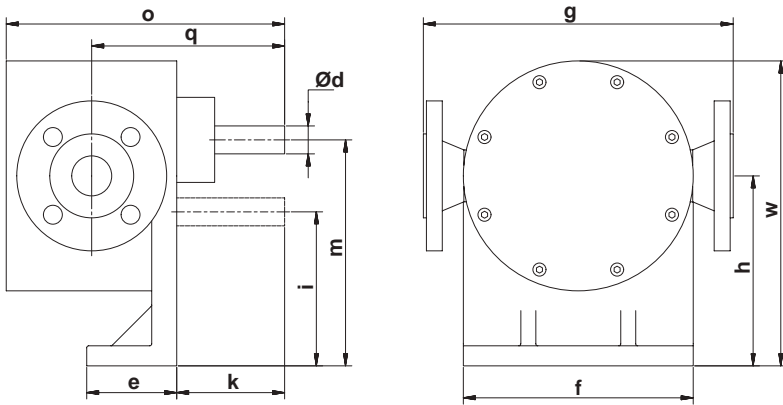


Pump size	Volume l/rev	Flow rates*																	
		n=100 RPM		n=200 RPM		n=300 RPM		n=500 RPM		n=750 RPM		n=1000 RPM		n=1500 RPM		n=2000 RPM		n=3000 RPM	
		l/min	m ³ /h	l/min	m ³ /h	l/min	m ³ /h	l/min	m ³ /h	l/min	m ³ /h	l/min	m ³ /h	l/min	m ³ /h	l/min	m ³ /h	l/min	m ³ /h
2	0.004	0.4	0.03	0.8	0.05	1.3	0.1	2.1	0.13	3.2	0.2	4.2	0.25	6.3	0.4	8.4	0.5	12.6	0.8
5	0.02	1.8	0.1	3.5	0.2	5.3	0.3	9	0.5	13.2	0.8	18	1.1	26.5	1.6	35	2.1	53	3.2
10	0.02	2.1	0.1	4.2	0.3	6.3	0.4	11	0.6	16	1	21	1.3	32	1.9	42	2.5	63	3.8
25	0.03	3.2	0.2	6.4	0.4	10	0.6	16	1	24	1.4	32	1.9	48	2.9	64	3.8	96	5.7
32	0.04	4.3	0.3	8.6	0.5	13	0.8	21	1.3	32	1.9	43	2.6	64	4	86	5		
40	0.10	10	0.6	20	1.2	30	1.8	51	3	76	4.6	102	6	152	9	203	12		
50	0.13	13	0.8	26	1.6	40	2.4	66	4	99	6	132	8	198	12	264	15.8		
65	0.17	17	1	33	2	50	3	83	5	125	7	166	10	249	15				

*The exact flow rate depends on the rotation speed (RPM), liquid viscosity, working pressure, pressure head and characteristics of the working liquid.



DIMENSIONS



Pump size	2	5	10	25	32	40	50	65
Ød	8	14	14	18	18	28	28	28
e	60	80	80	90	90	90	90	90
f	99	125	125	190	190	230	230	230
k	90	87	87	87	87	108	108	108
h	87.5	110	110	166	166	190	190	190
m	100	128	128	196	196	226	226	226
i	75	92	92	136	136	154	154	154
w	137	173	173	261	261	305	305	305
o	178	217	227	217	227	278	293	310
q	135	152	157	152	157	193	201	209
g	170	200	200	280	280	350	350	350
DN	15	20	25	25	32	40	50	65

in mm, subject to modifications

ZH & ZV BLUE SERIES GEAR PUMP

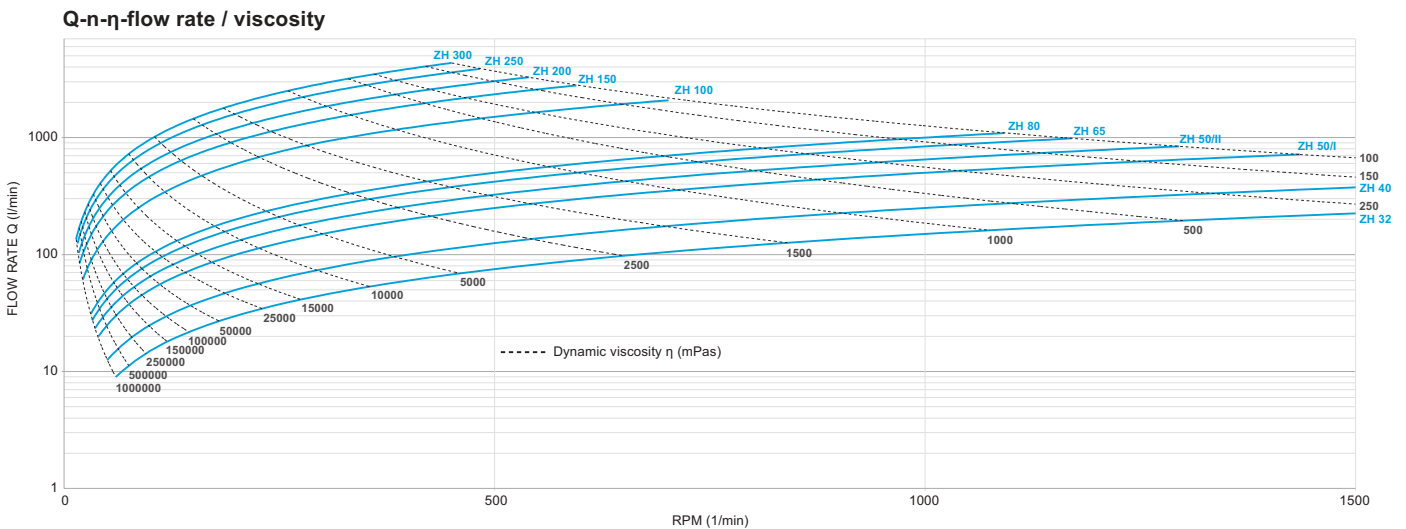
FEATURES

- **Pressure:** 120 bar
- **Suction lift:** 6 m
- **Flow rate:** 0.5 to 5,000 l/min
(0.03 to 300 m³/h)
- **RPM:** 1,500 RPM
- **Efficiency:** 60 to 92%
- **Viscosity:** 0.7 to 150,000 mPas*
- **Temperature:** -60 to 450°C

*Higher values upon request



SIZES AND FLOW RATES



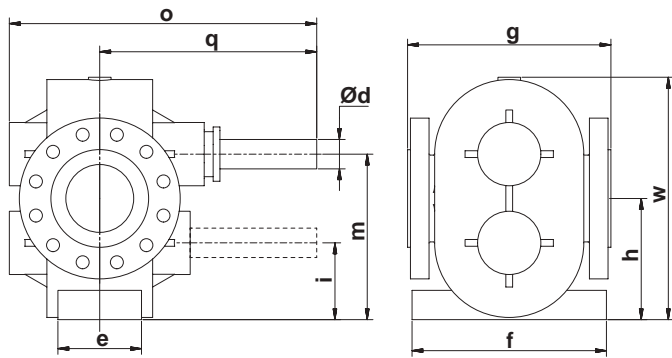
Pump size	Volume l/rev	Flow rates*															
		n=50 RPM		n=100 RPM		n=200 RPM		n=300 RPM		n=500 RPM		n=750 RPM		n=1000 RPM		n=1500 RPM	
		l/min	m ³ /h	l/min	m ³ /h	l/min	m ³ /h	l/min	m ³ /h	l/min	m ³ /h	l/min	m ³ /h	l/min	m ³ /h	l/min	m ³ /h
32	0.15	7.5	0.5	15	0.9	30	1.8	45	2.7	75	4.5	113	6.8	150	9	225	14
40	0.25	12.5	0.8	25	1.5	50	3	75	4.5	125	7.5	188	11	250	15	375	23
50/I	0.5	25	1.5	50	3	100	6	150	9	250	15	375	23	500	30		
50/II	0.65	33	2	65	3.9	130	8	195	12	325	20	488	29	650	39		
65	0.84	42	2.5	84	5	168	10	252	15	420	25	630	38	840	50		
80	1	50	3	100	6	200	12	300	18	500	30	750	45	1000	60		
100	3	150	9	300	18	600	36	900	54	1500	90						
150	4.69	234	14	469	28	937	56	1406	84	2344	141						
200	6.07	304	18	607	36	1215	73	1822	109	3037	182						
250	8.01	400	24	801	48	1601	96	2402	144								
300	9.66	483	29	966	58	1932	116	2898	174								

*The exact flow rate depends on the rotation speed (RPM), liquid viscosity, working pressure, pressure head and characteristics of the working liquid.

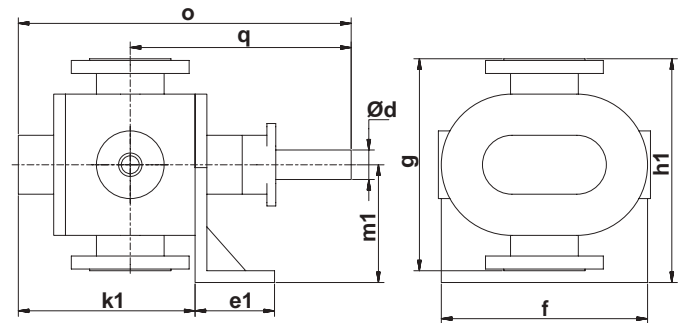


DIMENSIONS

ZH: horizontal configuration



ZV: vertical configuration



Pump size	32	40	50/I	50/II	65	80	100	150	200	250	300
Ød	24	38	38	38	42	48	65	75	76	77	78
e	75	60	90	130	80	120	180	240	240	380	380
e1	85	120	120	120	130	135	150	220	220	320	320
f	150	258	258	258	320	350	430	550	550	550	550
w	195	290	290	290	363	395	52	635	635	635	635
g	220	258	258	258	350	360	450	560	560	560	560
h	95,5	148	148	148	183	200	260	315	315	315	315
h1	175	240	240	240	300	320	410	540	540	540	540
k1	128	155	185	225	165	215	300	400	400	540	540
m	128	196	196	196	248	270	358	425	425	425	425
m1	100	140	140	140	165	170	220	315	315	315	315
i	63	100	100	100	122	160	162	205	205	205	205
o	280	400	430	505	445	495	680	806	806	946	946
q	195	320	335	350	330	350	480	520	520	660	660
DN	32	40	50	50	65	80	100	150	200	250	300

in mm, subject to modifications

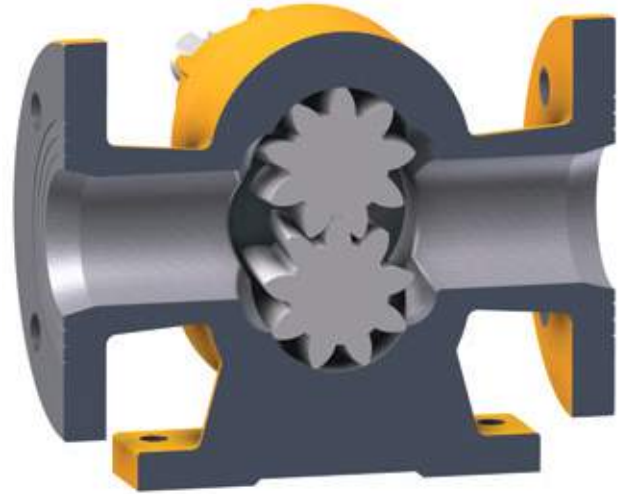
PQ GREEN SERIES

GEAR PUMP

FEATURES

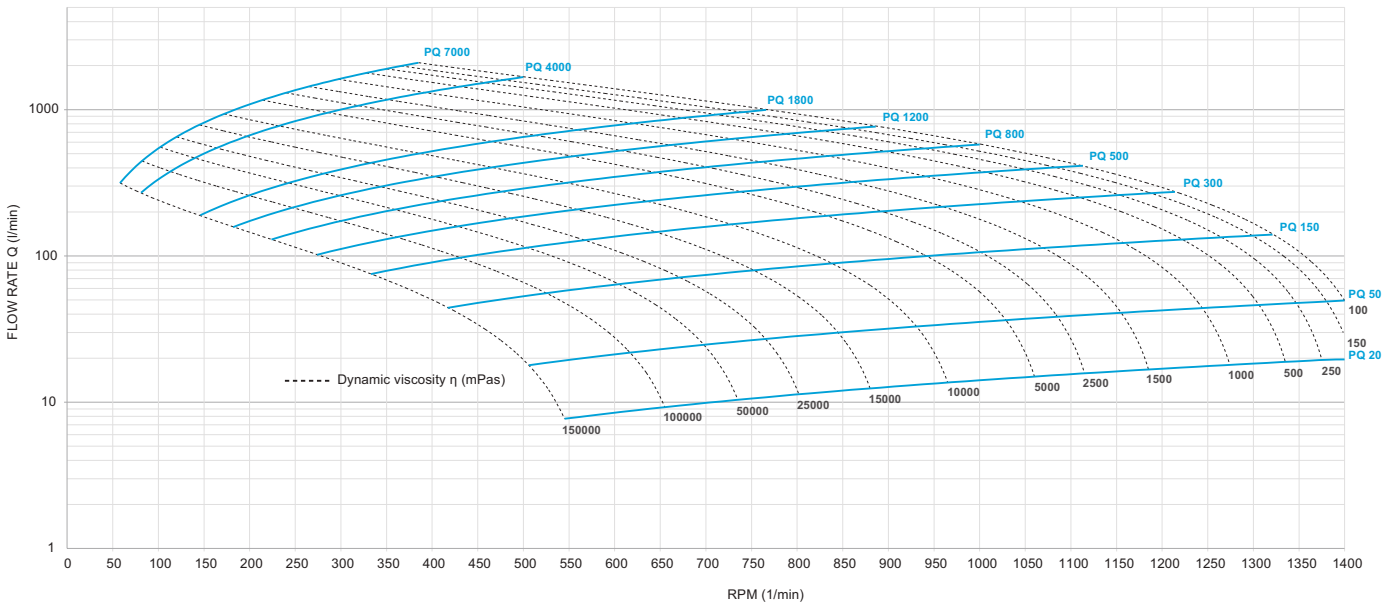
- **Pressure:** up to 20 bar
- **Suction lift:** 4 m
- **Flow rate:** 0.14 to 2283 l/min (0.008 to 137 m³/h)
- **RPM:** 1,500 RPM*
- **Efficiency:** 60 to 74%
- **Viscosity:** 5 to 140,000 mPas
- **Temperature:** -60 to 450°C

*Higher values upon request



SIZES AND FLOW RATES

Q-n- η -flow rate / viscosity

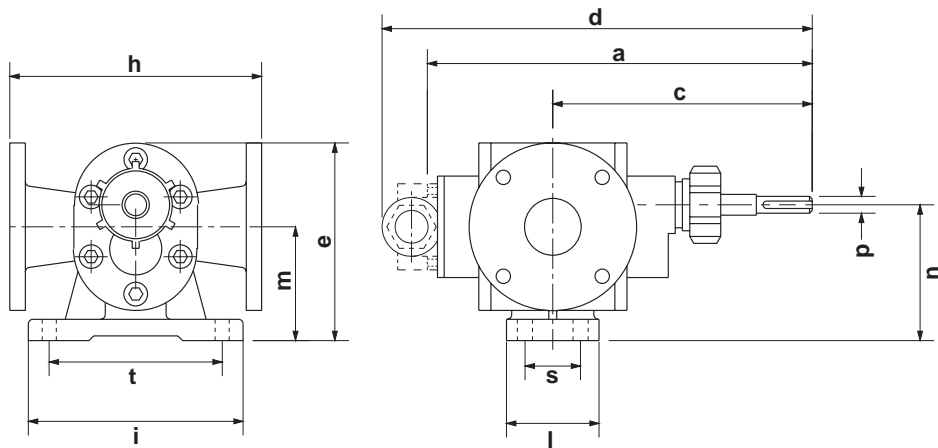


Pump size	Volume l/rev	Flow rates*															
		n=100 RPM		n=200 RPM		n=300 RPM		n=450 RPM		n=700 RPM		n=950 RPM		n=1200 RPM		n=1400 RPM	
		l/min	m ³ /h	l/min	m ³ /h	l/min	m ³ /h	l/min	m ³ /h	l/min	m ³ /h	l/min	m ³ /h	l/min	m ³ /h	l/min	m ³ /h
20	0.014	1.4	0.1	2.8	0.2	4.2	0.3	6.4	0.4	10	0.6	13.4	0.8	17	1	19.8	1.2
50	0.035	3.5	0.2	7.1	0.4	10.6	0.6	15.9	1	24.8	1.5	33.6	2	42.5	2.5	49.5	3
150	0.11	10.6	0.6	21.2	1.3	31.8	1.9	47.7	2.9	74	4.5	101	6	127	7.6		
300	0.23	22.6	1.4	45.2	2.7	67.8	4.1	101.7	6.1	158.2	9.5	214.7	12.9	271	16.3		
500	0.37	37.2	2.2	74.4	4.5	111.6	6.7	167.4	10	260.4	15.6	353.4	21.2				
800	0.58	58	3.5	115.6	6.9	173.4	10.4	260.1	15.6	404.6	24.3	549.1	32.9				
1200	0.87	86.6	5.2	173.2	10.4	259.8	15.6	389.7	23.4	606.2	36.4						
1800	1.3	130	7.8	260	15.6	390	23.4	585	35.1	910	54.6						
4000	3.34	334	20	668	40	1001	60	1502	90								
7000	5.44	544	33	1087	65	1631	98										

*The exact flow rate depends on the rotation speed (RPM), liquid viscosity, working pressure, pressure head and characteristics of the working liquid.



DIMENSIONS



Pump size	cc/r	Flange	h	a	c	d	e	i	l	m	n	p	s	t
5	4.23	1/2"	96	146	99	167	107	112	42	56	70	12	-	80
20	14.13	3/4"	112	176	118	202	107	112	50	56	70	12	-	80
50	35.39	1"	114	240	159	284	145	160	58	84	100	15	-	130
150	106	1 1/2"	155	307	195	362	175	180	74	100	122	18	-	130
300	226	DN 65	260	365	245	420	209	190	100	117	147	28	60	159
500	372	DN 80	295	417	279	458	249	220	80	130	171.5	35	50	180
800	578	DN 80	295	467	304	508	249	220	100	130	171.5	35	60	180
1200	866	DN 100	386	491	339	562	350	300	110	190	248	40	70	250
1800	1300	DN 100	386	551	369	622	350	300	110	190	248	40	70	250
4000	3338	DN 125	450	770	522	843	465	320	195	230	313	70	140	270
7000	5435	DN 125	390/450	855	565	928	465	320	200	230	315	70	140	270

in mm, subject to modifications

ZI GREEN SERIES

INTERNAL GEAR PUMP

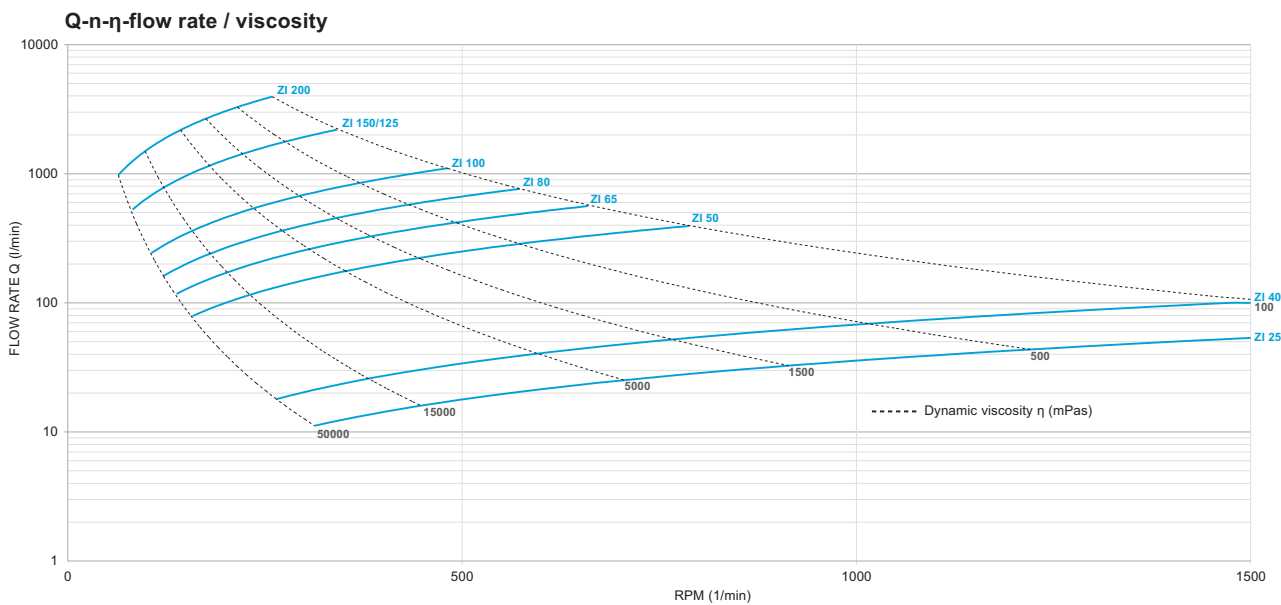
FEATURES

- **Pressure:** up to 14 bar
- **Suction lift:** 4 m
- **Flow rate:** 10 to 4120 l/min (0.1 to 250 m³/h)
- **RPM:** 1780 RPM
- **Efficiency:** up to 90%
- **Viscosity:** 1 to 55,000 mPas*
- **Temperature:** -40 to 300°C

*Higher values upon request

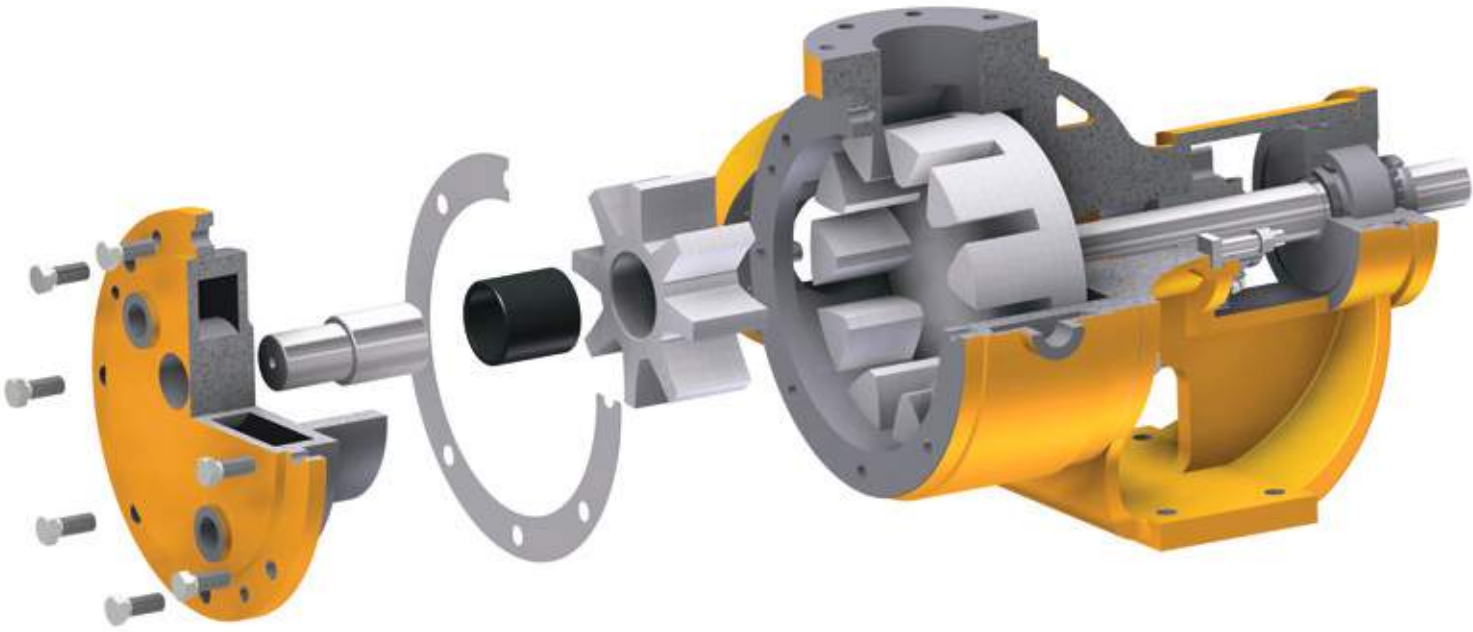


SIZES AND FLOW RATES

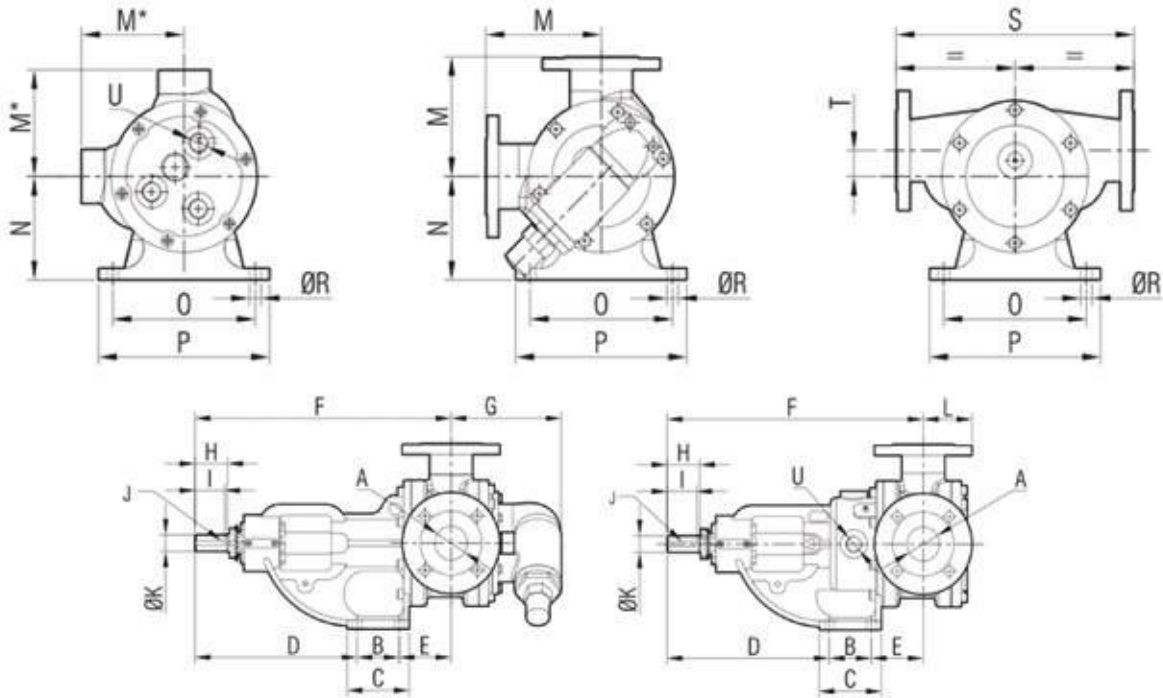


Pump size	Volume l/rev	Flow rates*															
		n = 100 min ⁻¹		n = 200 min ⁻¹		n = 300 min ⁻¹		n = 450 min ⁻¹		n = 700 min ⁻¹		n = 950 min ⁻¹		n = 1200 min ⁻¹		n = 1400 min ⁻¹	
		l/min	m ³ /h	l/min	m ³ /h	l/min	m ³ /h	l/min	m ³ /h	l/min	m ³ /h	l/min	m ³ /h	l/min	m ³ /h	l/min	m ³ /h
25	0.04	3.6	0.2	7.1	0.4	10.7	0.6	16	1	25	1	34	2	43	2.6	50	3
40	0.1	6.8	0.4	13.6	0.8	20.4	1.2	31	1.8	48	3	65	3.9	81	4.9	95	6
50	0.50	50	3	100	6	150	9	225	13.5	350	21						
65	0.85	85.2	5.1	170.4	10.2	256	15.3	383	23								
80	1.33	133	8	266.6	16	400	24	600	36								
100	2.29	229	13.8	458.3	27.5	688	41.3	1031	62								
125	6.43	643	38.6	1286	77.2	1929	116										
150	6.43	643	38.6	1286	77.2	1929	116										
200	15.26	1526	91.6	3052	183												

*The exact flow rate depends on the rotation speed (RPM), liquid viscosity, working pressure, pressure head and characteristics of the working liquid.



DIMENSIONS



Pump size	cc/r	PN	Flange	B	C	D	E	F	G	H	I	J	K	L	M	M*	N	O	P	R	S	T	U
25	35.7	16	1"	50	75	127	73	250	110	42	30	6x6	Ø18	69	95	78	75	110	140	10	-	-	R 1/2"
40	67.9	16	1 1/2"	58	90	165	97	320	115	50	45	6x6	Ø20	72	93	78	90	137	170	12	184	16	R 1/2"
50	500	16	2"	70	105	275	88	432	186	55	50	8x7	Ø27	89	162	140	140	200	240	14	334	35	R 3/4"
65	851.9	16	2 1/2"	100	133	274	93	467	206	60	50	8x7	Ø30	107	185	165	180	180	220	14	377	30	R 1"
80	1333.3	16	3"	100	133	274	119	492	206	60	50	8x7	Ø30	107	185	170	180	180	220	14	385	30	R 1"
100	2291.7	16	4"	110	160	261	163	534	249	271	60	12x8	Ø42	123	215	-	237	220	280	18	-	-	R 1"
125	6428.6	16	5"	160	240	355	130	685	319	90	85	16x10	Ø55	152	245	245	250	250	320	18	-	-	R 1 1/4"
150	6428.6	16	6"	150	225	648	166	705	330	90	85	16x10	Ø55	166	265	241	250	250	315	23	530	-	R 1 1/4"
200	15,263.2	16	8"	178	263	706	204	820	480	125	120	18x11	Ø60	204	362	337	337	350	406	23	724	-	R 1 1/4"

in mm, subject to modifications

KE & KD BLUE SERIES

ROTARY LOBE PUMP

FEATURES

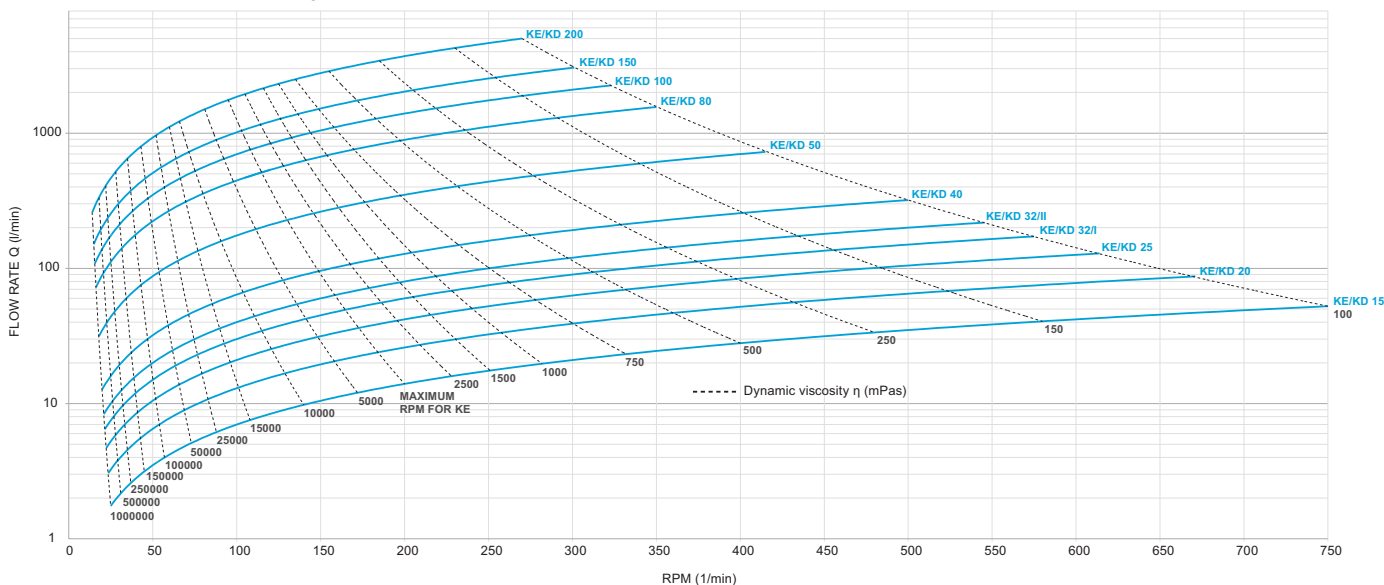
- **Pressure:** 40 bar
- **Suction lift:** 8 m
- **Flow rate:** 1 to 5,000 l/min (0.06 to 300 m³/h)
- **RPM:** 750 RPM*
- **Efficiency:** 75 to 92%
- **Particle size:** max. 80 mm
- **Viscosity:** 1 to 3,400,000 mPas
- **Temperature:** -60 to 450°C

*Higher values upon request



SIZES AND FLOW RATES

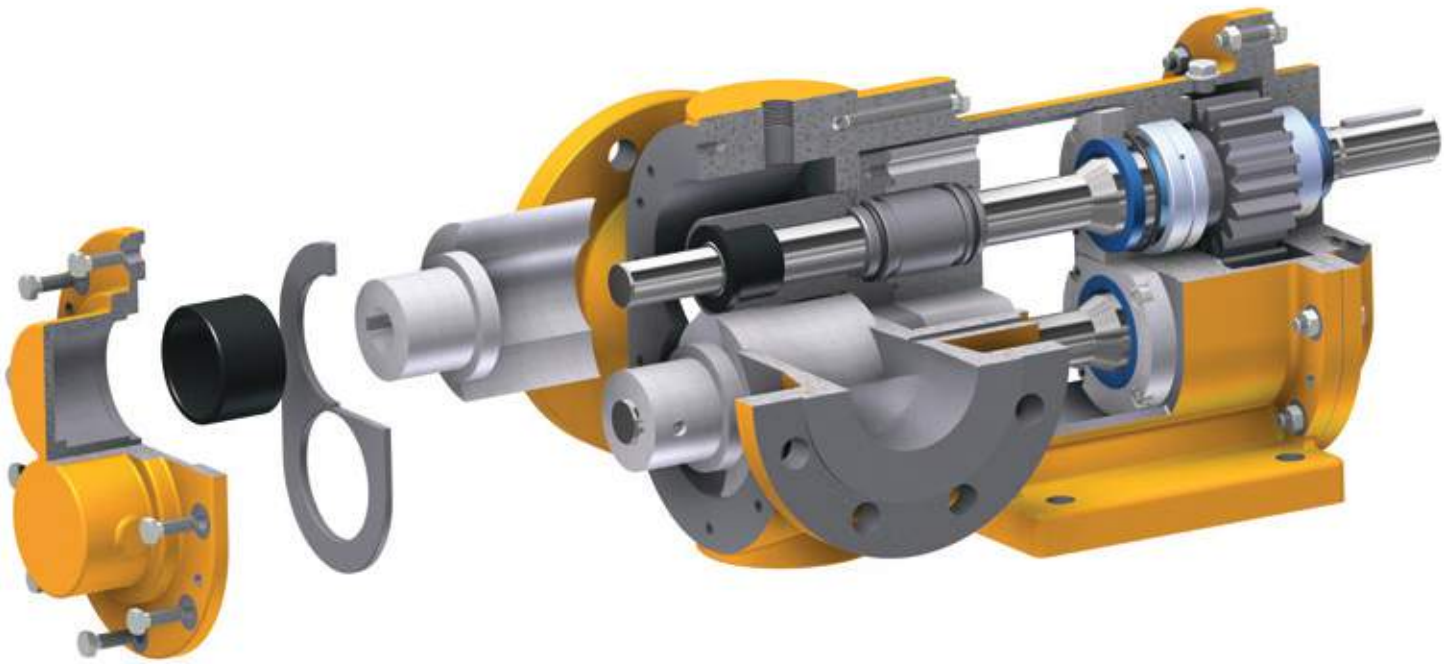
Q-n- η -flow rate / viscosity



Pump size	Volume l/rev	Flow rates*															
		n = 25 min ⁻¹		n = 50 min ⁻¹		n = 100 min ⁻¹		n = 150 min ⁻¹		n = 250 min ⁻¹		n = 400 min ⁻¹		n = 600 min ⁻¹		n = 750 min ⁻¹	
		l/min	m ³ /h	l/min	m ³ /h	l/min	m ³ /h	l/min	m ³ /h	l/min	m ³ /h	l/min	m ³ /h	l/min	m ³ /h	l/min	m ³ /h
15	0.07	1.8	0.1	3.5	0.2	7	0.4	10.5	0.6	17.5	1.1	28	1.7	42	2.5	53	3.2
20	0.13	3.3	0.2	6.5	0.4	13	0.8	19.5	1.2	32.5	2	52	3.1	78	4.7		
25	0.21	5.2	0.3	10.5	0.6	21	1.3	31.5	1.9	52.5	3.2	84	5	126	7.6		
32/I	0.3	7.5	0.5	15	0.9	30	1.8	45	2.7	75	4.5	120	7.2				
32/II	0.4	10.0	0.6	20	1.2	40	2.4	60	3.6	100	6	160	9.6				
40	0.64	16.0	1	32	1.9	64	3.8	96	5.8	160	9.6	256	15.4				
50	1.75	43.8	2.6	87.5	5.3	175	10.5	263	15.8	438	26.3	700	42				
80	4.46	112	6.7	223	13.4	446	27	669	40.1	1115	67						
100	6.98	175	10.5	349	20.9	698	42	1047	62.8	1745	105						
150	10.14	254	15.2	507	30.4	1014	61	1521	91.3	2535	152						
200	18.53	463	28	927	56	1853	111	2780	167	4633	278						

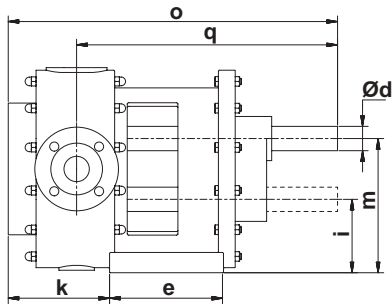
*The exact flow rate depends on the rotation speed (RPM), liquid viscosity, working pressure, pressure head and characteristics of the working liquid.

■ = only KD

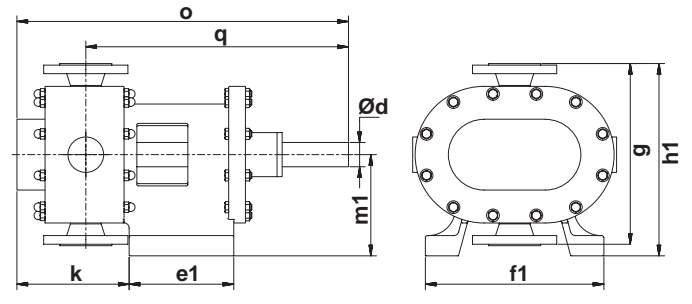


DIMENSIONS

KEH/KDH



KEV/KDV



Pump size	15	20	25	32/I	32/II	40	50	80	100	150	200
Ød	28	28	28	28	28	32	48	55	60	75	90
e	195	195	195	195	195	194	225	264	290	460	515
e1	195	195	195	195	195	140	205	240	290	460	490
f	180	180	180	180	180	240	350	400	430	550	550
f1	180	180	180	180	180	240	350	380	430	550	540
g	180	166	180	190	190	300	360	450	550	600	700
h	128	128	128	128	128	150	205	260	313	365	420
h1	210	203	210	215	215	330	380	485	558	630	730
k	103	108	123	148	168	173	210	256	310	345	465
m	166	166	166	166	166	190	265	335	400	470	540
m1	120	120	120	120	120	180	200	260	283	330	380
i	90	90	90	90	90	110	145	185	225	260	300
o	465	470	485	510	530	540	660	760	875	1140	1310
q	382	385	392	405	415	420	515	583	657	900	992
w	251	251	251	251	251	295	405	510	620	710	815
DN	15	20	25	32	32	40	50	80	100	150	200

in mm, subject to modifications

KS & KDS BLUE SERIES ROTARY LOBE PUMP

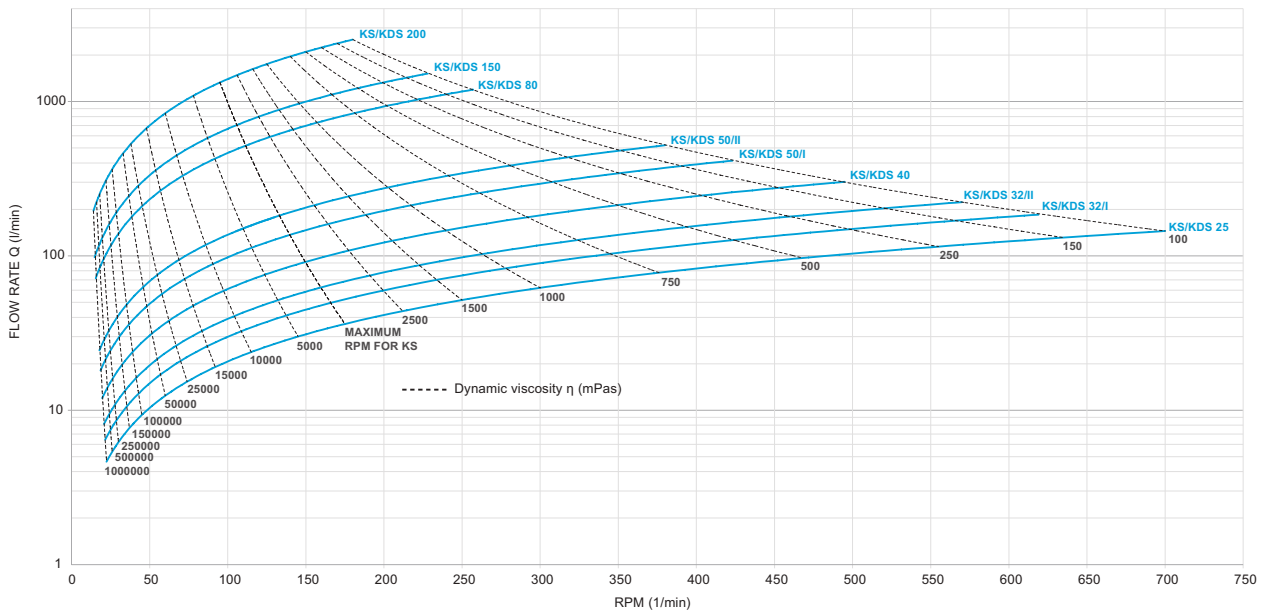
FEATURES

- **Pressure:** 70 bar
- **Suction lift:** 4 m
- **Flow rate:** 2 to 2,474 l/min (0.12 to 148 m³/h)
- **RPM:** 750 RPM
- **Efficiency:** 75 to 92%
- **Particle size:** max. 50 mm
- **Viscosity:** 10 to 3,400,000 mPas
- **Temperature:** -60 to 450°C



SIZES AND FLOW RATES

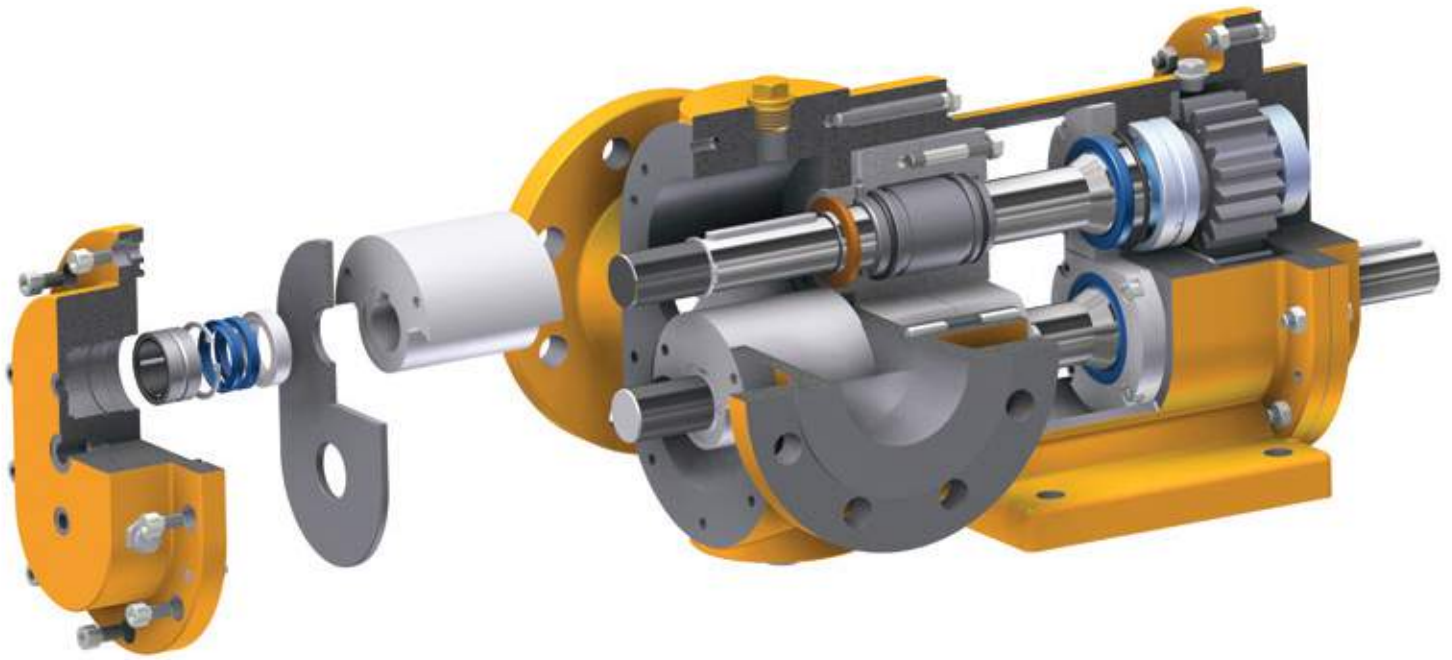
Q-n-η-flow rate / viscosity



Pump size	Volume l/rev	Flow rates*															
		n = 25 min ⁻¹		n = 50 min ⁻¹		n = 100 min ⁻¹		n = 150 min ⁻¹		n = 250 min ⁻¹		n = 400 min ⁻¹		n = 600 min ⁻¹		n = 700 min ⁻¹	
		l/min	m³/h	l/min	m³/h	l/min	m³/h	l/min	m³/h	l/min	m³/h	l/min	m³/h	l/min	m³/h	l/min	m³/h
25	0.21	5.2	0.3	10.4	0.6	20.7	1.2	31	1.9	52	3	83	5	124	7.5	145	9
32/I	0.3	7	0.4	15	0.9	30	1.8	45	2.7	75	4	120	7.2	179	10.8		
32/II	0.39	10	0.6	20	1.2	39	2.3	59	3.5	98	6	156	9.4				
40	0.61	15	0.9	30	1.8	61	3.7	92	5.5	152	9	244	14.6				
50/I	0.98	24	1.5	49	2.9	98	5.9	147	8.8	245	15	392	23.5				
50/II	1.37	34	2.1	69	4.1	137	8.2	206	12.3	343	21						
80	4.65	116	7	232	13.9	465	27.9	697	41.8	1162	70						
150	6.66	166	10	333	20	666	40	999	59.9								
200	14	350	21	700	42	1400	84	2100	126								

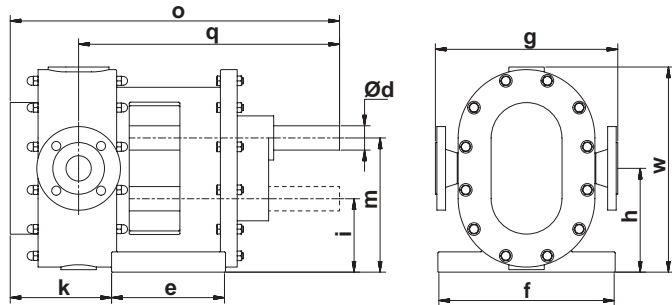
*The exact flow rate depends on the rotation speed (RPM), liquid viscosity, working pressure, pressure head and characteristics of the working liquid.

■ = only KDS

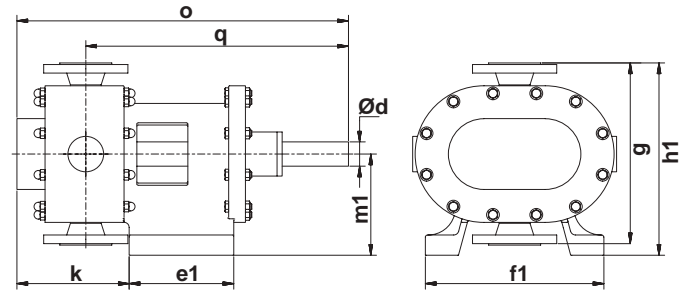


DIMENSIONS

KSH/KDSH



KSV/KDSV



Pump size	25	32/I	32/II	40	50/ I	50/ II	80	150	200
Ød	28	28	28	32	48	48	55	90	90
e	195	195	195	194	225	315	264	460	515
e1	195	195	195	140	205	287	240	460	490
f	180	180	180	240	350	350	400	550	550
f1	180	180	180	240	350	350	380	550	540
g	180	190	190	300	360	360	450	600	700
h	128	128	128	150	205	205	260	365	420
h1	210	215	215	330	380	380	485	630	730
k	123	148	168	173	210	294	256	345	465
m	166	166	166	190	265	265	335	470	540
m1	120	120	120	180	200	200	260	330	380
i	90	90	90	110	145	145	185	260	300
o	485	510	530	540	660	924	760	1140	1310
q	392	405	415	420	515	721	583	900	992
w	251	251	251	295	405	405	510	710	815
DN	25	32	32	40	50	50	80	150	200

in mm, subject to modifications

KM BLUE SERIES

MULTI-WING LOBE PUMP

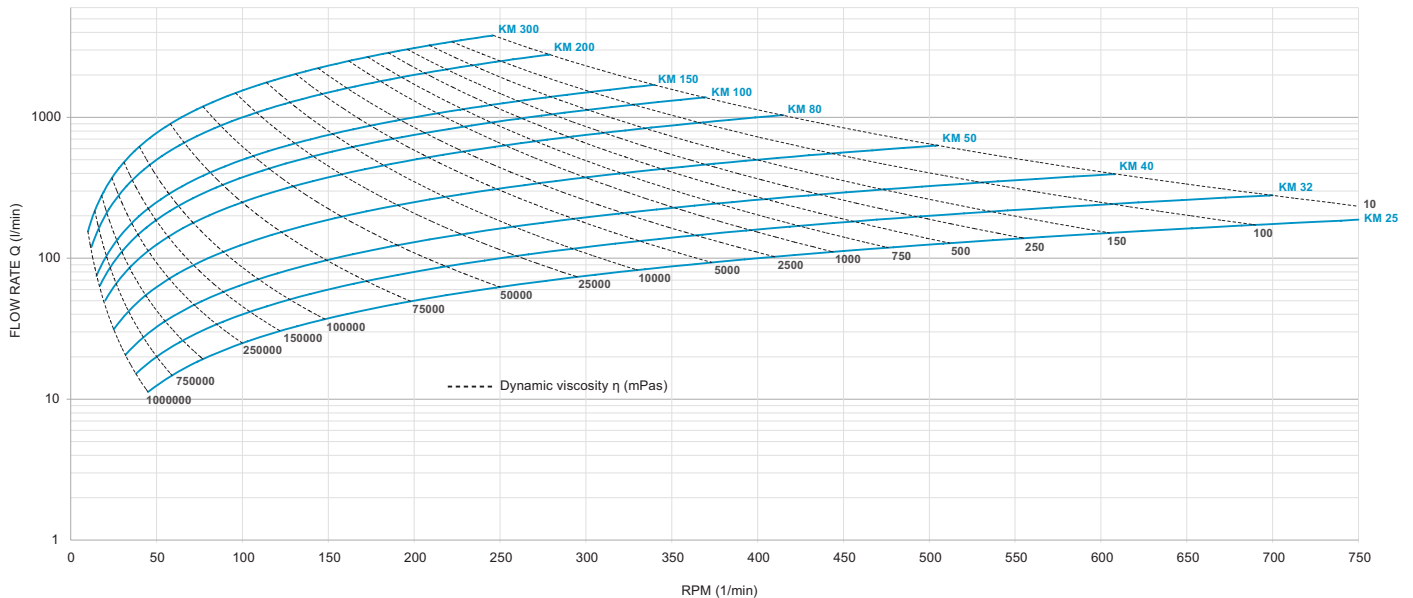
FEATURES

- **Pressure:** 70 bar
- **Suction lift:** 6 m
- **Flow rate:** 2 to 3,875 l/min (0.15 to 233 m³/h)
- **RPM:** 750 RPM
- **Efficiency:** 75 to 92%
- **Particle size:** max. 1 mm
- **Viscosity:** 1 to 3,400,000 mPas
- **Temperature:** -60 to 450°C



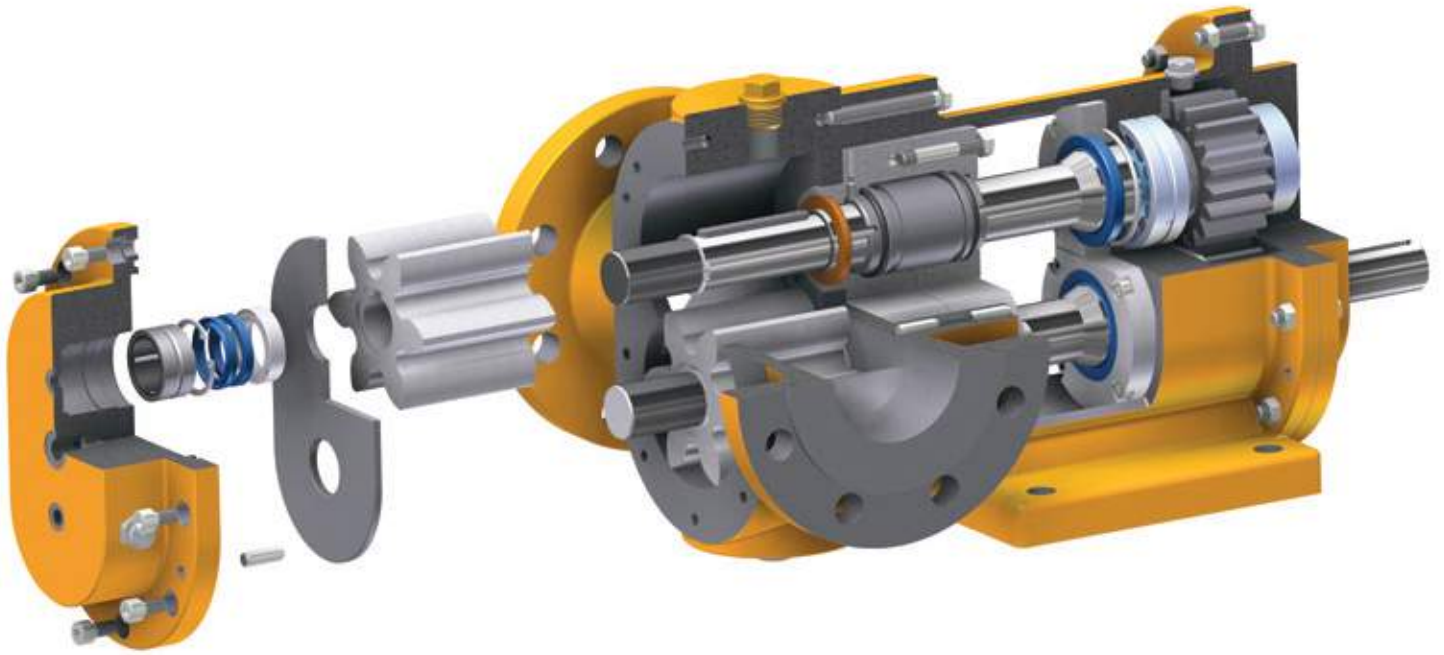
SIZES AND FLOW RATES

Q-n-η-flow rate / viscosity



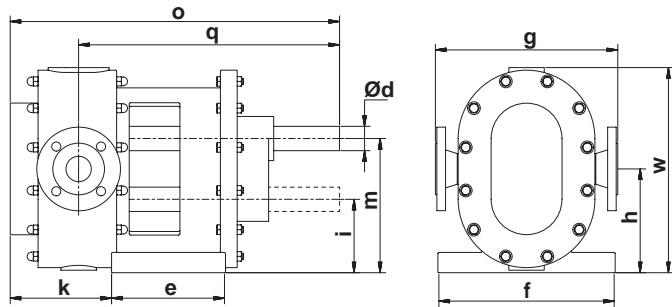
Pump size	Volume l/rev	Flow rates*															
		n = 25 min ⁻¹		n = 50 min ⁻¹		n = 100 min ⁻¹		n = 150 min ⁻¹		n = 250 min ⁻¹		n = 400 min ⁻¹		n = 600 min ⁻¹		n = 750 min ⁻¹	
		l/min	m ³ /h	l/min	m ³ /h	l/min	m ³ /h	l/min	m ³ /h	l/min	m ³ /h	l/min	m ³ /h	l/min	m ³ /h	l/min	m ³ /h
25	0.25	6.3	0.4	12.5	0.8	25	1.5	37.5	2.3	62.5	3.8	100	6	150	9	187.5	11.3
32	0.4	10	0.6	20	1.2	40	2.4	60	3.6	100	6	160	9.6	240	14.4		
40	0.65	16.3	1	32.5	2	65	3.9	97.5	5.9	162.5	9.8	260	15.6	390	23.4		
50	1.25	31.3	1.9	62.5	3.8	125	7.5	187.5	11.3	312.5	18.8	500	30				
80	2.5	62	3.8	125	7.5	250	15	375	22.5	625	37.5	1000	60				
100	3.75	94	5.6	187.5	11.3	375	22.5	562.5	34	937.5	56						
150	5	125	7.5	250	15	500	30	750	45	1250	75						
200	10	250	15	500	30	1000	60	1500	90	2500	150						
300	15.5	387.5	23.25	775	46.5	1550	93	2325	140	3875	232						

*The exact flow rate depends on the rotation speed (RPM), liquid viscosity, working pressure, pressure head and characteristics of the working liquid.

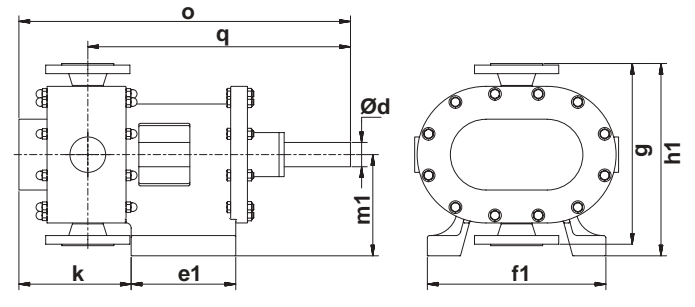


DIMENSIONS

KMH



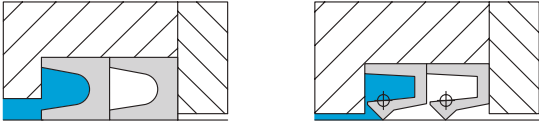
KMV



Pump size	25	32	40	50	80	100	150	200
Ød	28	28	32	48	55	60	90	90
e	195	195	194	225	225	264	290	290
e1	195	195	140	205	205	240	290	290
f	180	180	240	350	340	400	430	430
f1	180	180	240	350	360	380	430	430
g	255	255	300	360	450	450	550	550
h	128	128	150	205	225	260	313	313
h1	248	248	330	380	445	485	558	558
k	140	175	176	210	245	251	275	385
m	164	164	192	265	297	341	403	403
m1	120	120	180	200	240	260	283	283
i	92	92	108	145	153	179	223	223
o	505	538	543	660	697	768	835	950
q	400	415	420	515	537	596	647	720
w	251	251	295	405	445	510	620	620
DN	25	32	40	50	80	100	150	200

in mm, subject to modifications

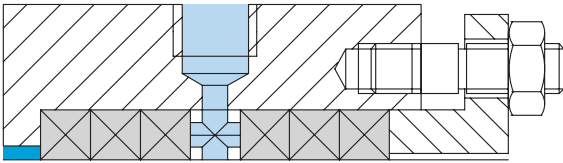
SEAL OPTIONS



LIP SEAL

Max. pressure: 16 bar

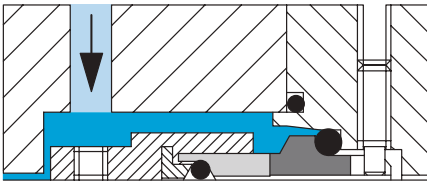
Rubber sealing rings available depending on temperature, pressure and RPM.



PACKING

Max. pressure: 120 bar

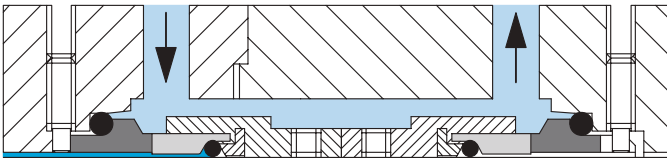
Available with or without sealing/lubricating liquid connection.



SINGLE MECHANICAL SEALS

Max. pressure: 120 bar

Chosen specifically for customers pumping requirements. The pumps are designed to accept seals from all major manufacturers and can accommodate component or cartridge seals. All pumps are designed to accommodate API 682 mechanical seals and all API seal thermosyphon systems are available.

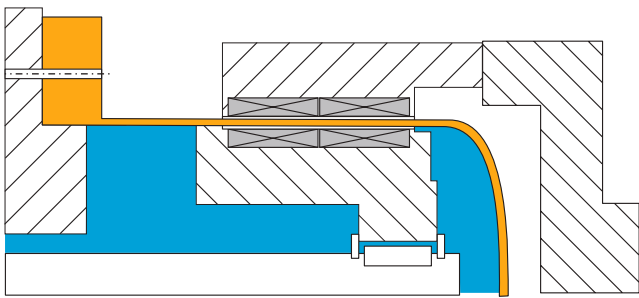


DOUBLE MECHANICAL SEALS

Max pressure: special seals up to 120 bar

Note: Barrier fluid pressure must be at least 2 bar over pump pressure.

All pumps are designed to accommodate API 682 mechanical seals and all API seal thermosyphon systems are available. Designed for explosive, toxic or specialty applications where no leakage is allowed.



MAGNETIC COUPLING

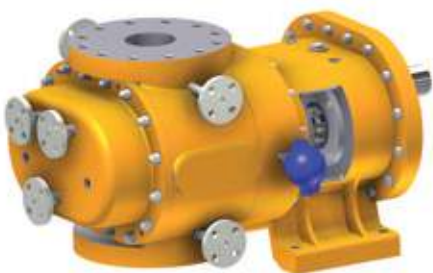
Max. pressure: 90 bar

- Available only for gear pumps
- Results in a hermetically sealed pump with no leakage
- Includes built-in motor overloading protection
- Available in API design
- Maintenance free, no wearing parts



CUSTOM SOLUTIONS FOR EXTREME APPLICATIONS

We provide custom solutions for extreme applications and pride ourselves on being able to produce pumps individually designed to solve your specific problem. Our team of engineers is ready to work with you on a design based on your requirements. We have seen almost every application in our 90+ years of business and are positive that we can provide you a custom-built solution.



INDUSTRIES

We produce gear pumps and rotary lobe pumps for almost every application; API pumps for the petrochemical industry, CIP pumps, hermetically sealed pumps, high pressure pumps for extreme applications, explosion proof pumps for dangerous applications and many more. Our pumps have proven their quality and efficiency for over 90 years in the following industries:

CHEMICAL



In addition to our conventional pump range, special and custom pumps are available built out of special materials with high performance coatings, heating and cooling jackets and special sensor requirements.

PHARMACEUTICAL



To respond to the requirements of the pharmaceutical industry we have designed pumps with reduced surface roughness down to 4μ , CIP (cleaning in place) design and aseptic connections.

AUTOMOTIVE



Our pumps deliver solid emulsion and drilling liquids containing aluminium swarf and chips as well as wax, glue, paint containing solid color pigments and nanoparticles in accordance with the requirements of the automotive industry.

PETROCHEMICAL



We offer API self-priming rotary lobe and gear pumps with API 682 seals according to ATEX, TA-Luft, GOST-R and TR CU to deliver crude oil and all types of bitumen including those containing solids.

FIBER



We offer pumps with high system pressure and high dosing precision (optional with heating jacket) to deliver synthetic fibers, finishing agents, paints with pigments and dyestuffs.

REGENERATIVE / ENERGY



Our heavy duty pumps are designed to deliver biomass, liquid manure and silage in biogas plants at high temperatures and with high solids loading. Our pumps are also used in nuclear plants to deliver highly concentrated acids.

SHIPPING



We offer maritime-grade pumps for offshore applications to deliver heavy oil and machine lube oil. We also offer rotary lobe pumps to load and unload liquid chemicals, oil and bitumens with solids.

FOOD AND CANDY



Our stainless steel CIP rotary lobe pumps are in FDA compliant materials and are particular suitable for the meat and animal feed industry. We also offer special lobes to avoid caramelization on sugar based products as chocolate.

ABRASIVE SOLIDS



Our rotary lobe pumps are specially designed to pump liquids with high concentration of solid particles or abrasive products as well as cooling lubricants with cuttings.

BUILDING



Our pumps deliver primary materials, protective agents, white cement, glue, silicone, waste water and filled bitumen for the building industry. For high temperature applications, or outside installations, heating jackets are available.

BITUMEN



We offer special low-speed rotary lobe pumps with heating jackets to deliver bitumen and filled bitumen under working temperatures up to 450°C. These low-wear pumps are long lasting due to low speed and high material hardness.

METALLURGY



Rotary lobe and gear pumps with heating jackets are used for furan resins, refractory finishings, mercury, gallium, zinc alloy and stibium alloys up to 450°C including various molten metals with fully ceramic pumps.



**ZEILFELDER
PUMPEN**

A BRAND OF
**ASM
DIMATEC**



Headquarters

ASM DIMATEC GmbH
Department: Zeifelder Pumpen
Lehmkuhlenfeld 2
38444 Wolfsburg
Germany

T: +49 (5308) 69 38 0
F: +49 (5308) 69 38 118
E: info@zeifelder-pumpen.com
W: www.zeifelder-pumpen.com

made in Germany



ASM DIMATEC reserves the right to make changes at any time without prior notification.

Represented by:

